

CERTIFICATE OF LOCATION OF GOVERNMENT CORNER

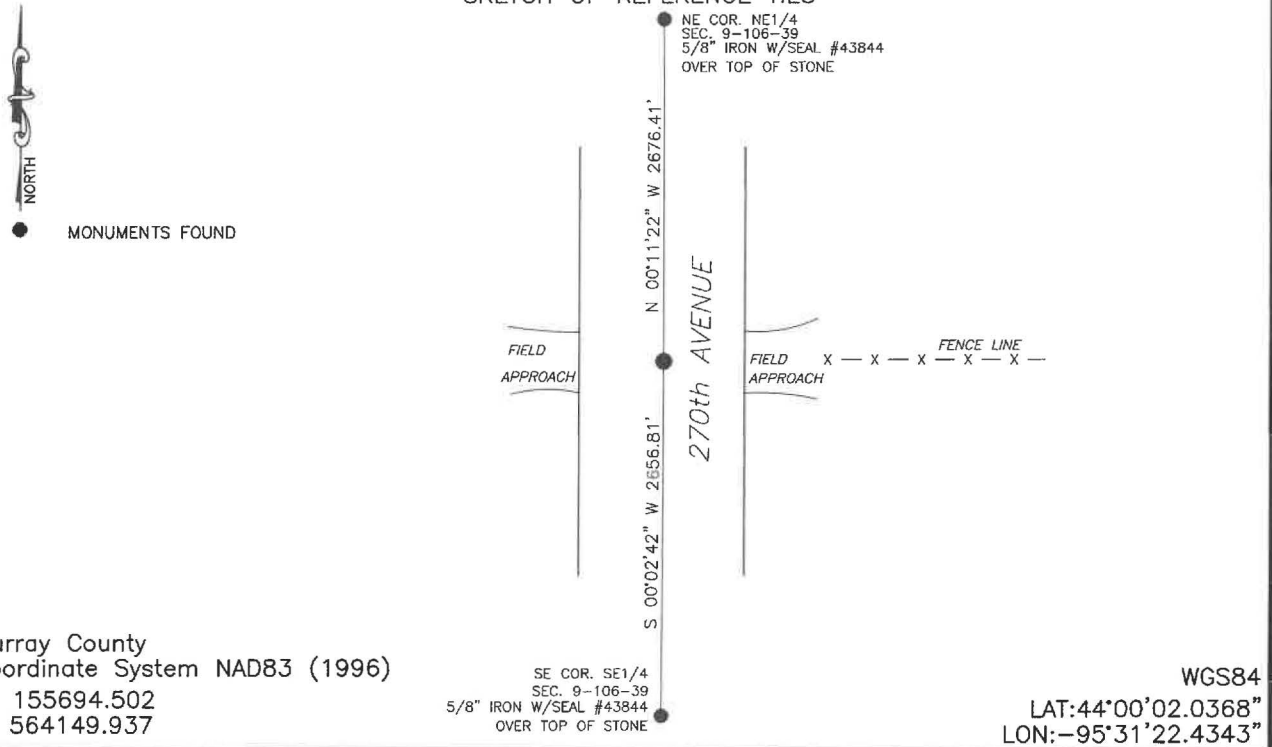
EAST QUARTER Corner of Section 9, Township 106, Range 39, 5TH P.M.

STATE OF MINNESOTA, County of MURRAY

At the corner location shown on the sketch:

- On 7/22/2024 found a large pointed field stone with a 1"x2"x12" long wooden hub
DATE
on the south side.
 - left monument as found, lowered monument, removed monument (explain)
- On 1/16/2025 placed a 5/8" iron with seal #43844 over top of the stone.
DATE

SKETCH OF REFERENCE TIES



Statement of evidence relative to this corner location is on back of page.

I hereby certify that this document and the data contained herein was prepared by me or under my direct supervision.

Daniel L. Buettel 3/12/2025
DATE
 Daniel L. Buettel
 License No. 43844

MAR 13 2025
Karen Bram
MURRAY COUNTY RECORDER

Statement of Evidence

EAST QUARTER CORNER SECTION 9, T106N, R39W of the 5th P.M.

In September 1858, W.J. Neely surveyed the east township line.

In July of 1861, J.W. Myers surveyed the north, south, and west township lines.

In August of 1861, Wellman & Smoot subdivided the township.

UNKNOWN DATE: county records show a pointed field stone at the corner and a steel pin set over top.

June 28, 2024 Bueltel-Moseng Land Surveying found a $\frac{5}{8}$ " iron with seal #16093. Probed beside the pin but did not hit the stone.

July 22, 2024 Bueltel-Moseng Land Surveying dug with a backhoe and found a large pointed field stone with a 1"x2"x12" wooden hub on the south side. We placed a $\frac{5}{8}$ " iron rebar on the north and south side for locating purposes.

Returned on January 16, 2025 and placed a $\frac{5}{8}$ " iron with seal #43844 over top of the stone.